

1  $\mu$ m  
┌───┐  
└───┘

Mag = 12.24 K X

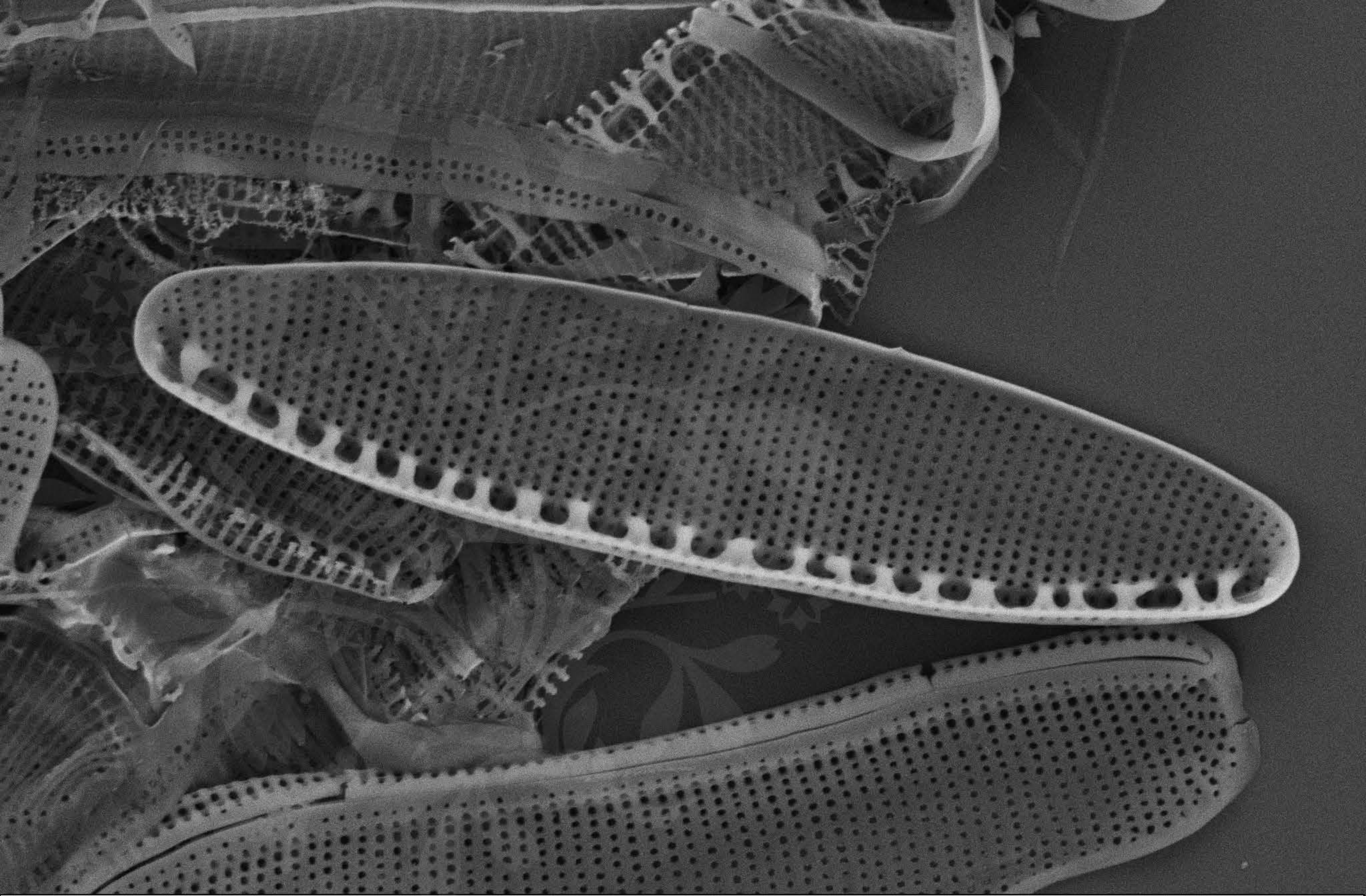
WD = 4 mm

EHT = 5.00 kV Signal A = SE2

File Name = 017-L44 Nit\_cf\_ardua\_bergii.tif

Date :8 Aug 2011





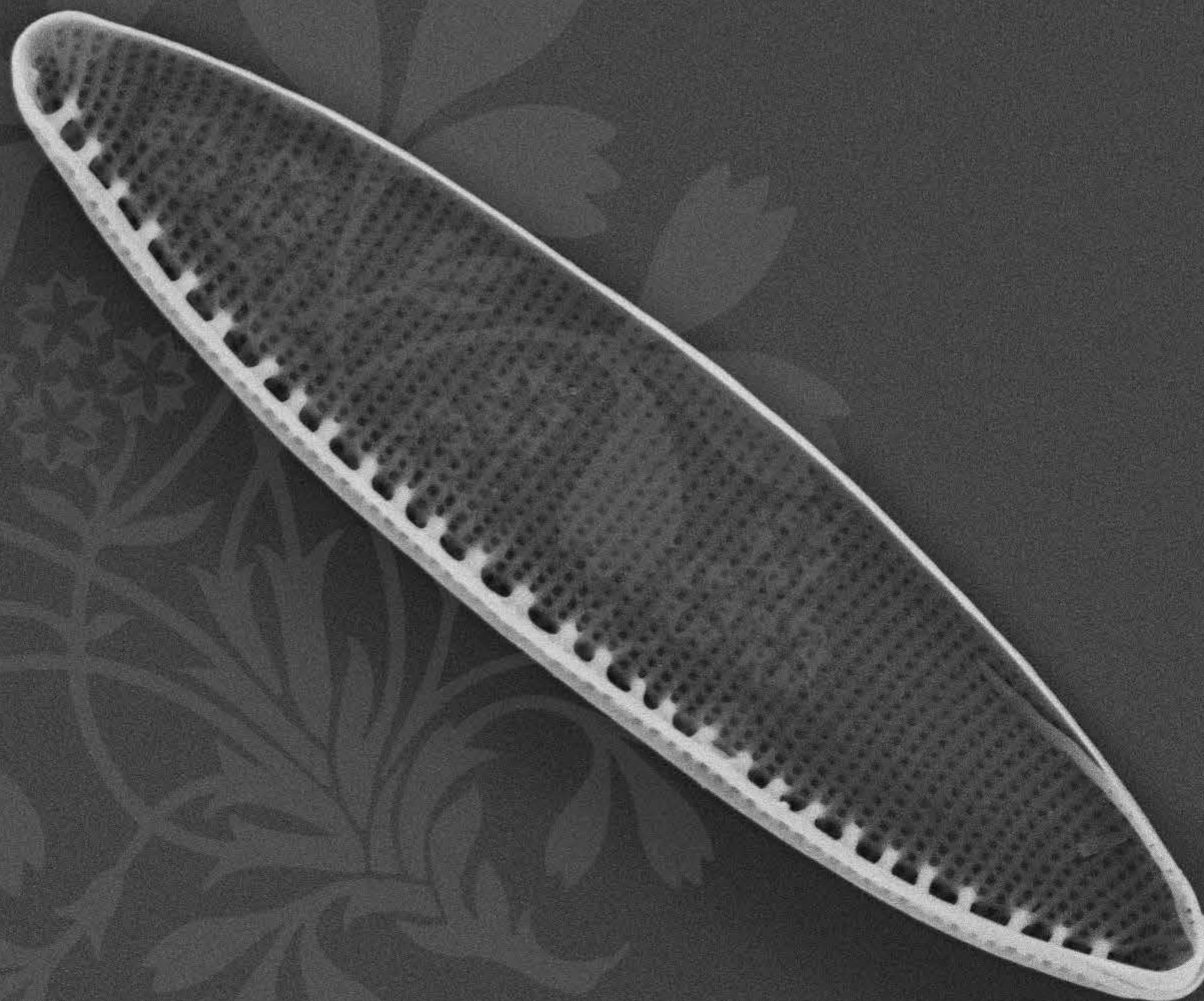
1  $\mu$ m  
|-----|

Mag = 21.46 K X  
WD = 4 mm

EHT = 5.00 kV Signal A = SE2  
File Name = 018-L44 Nit\_cf\_ardua\_bergii.tif

Date :8 Aug 2011





1  $\mu$ m  
|-----|

Mag = 16.15 K X

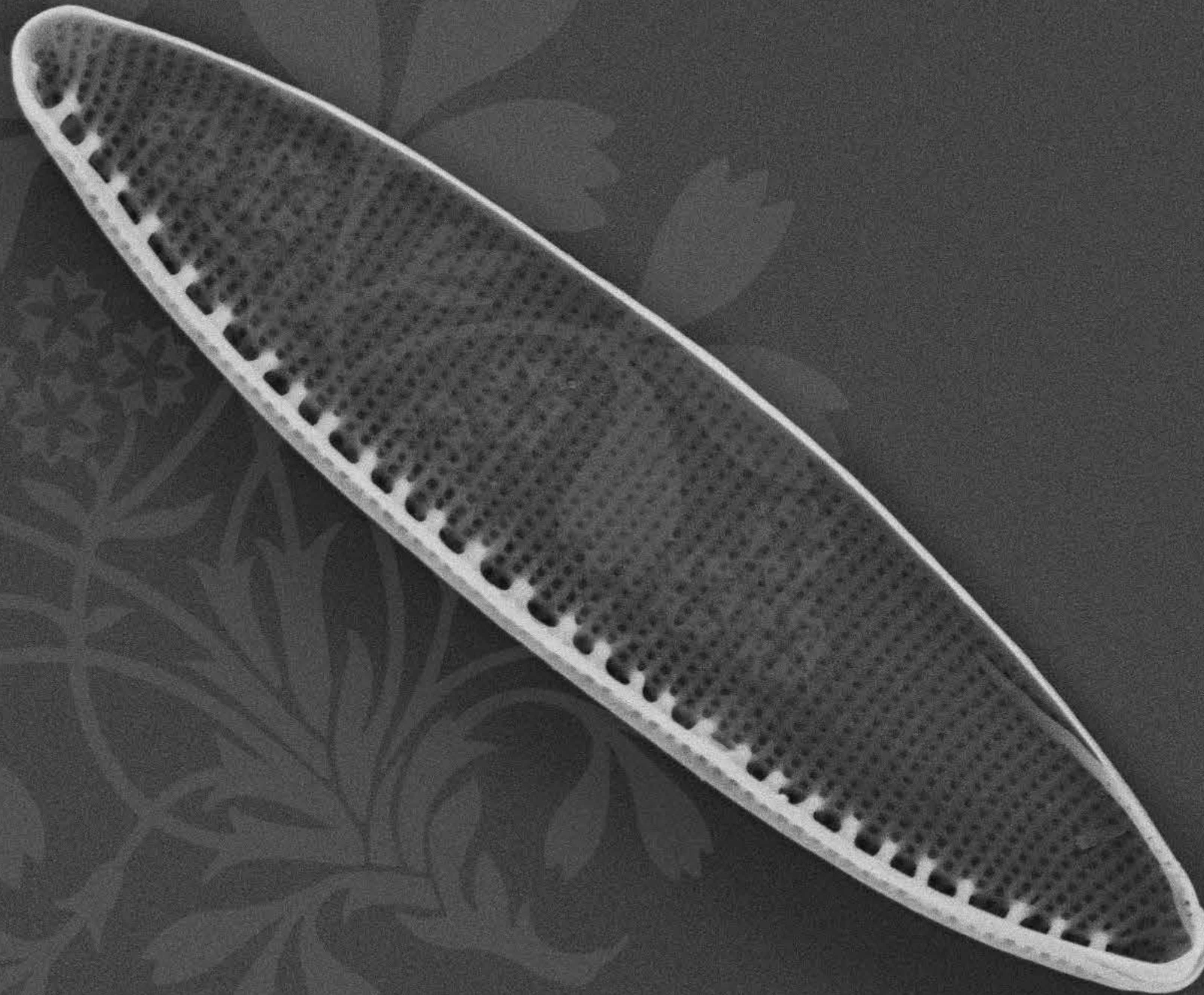
WD = 4 mm

EHT = 5.00 kV Signal A = SE2

File Name = 019-L44 Nit\_cf\_ardua\_bergii.tif

Date :8 Aug 2011





1  $\mu\text{m}$   
|-----|

Mag = 16.15 K X

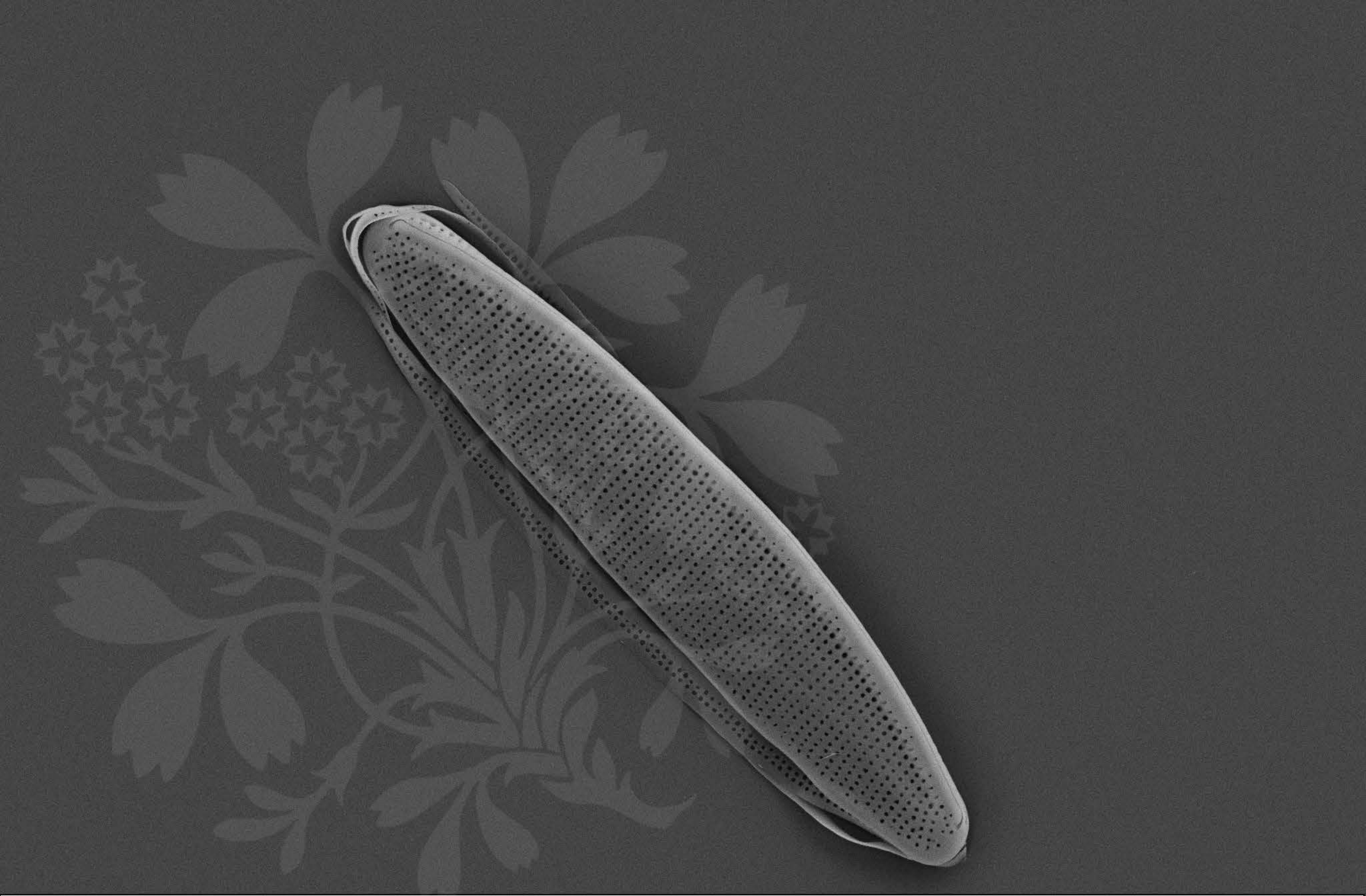
WD = 4 mm

EHT = 5.00 kV Signal A = SE2

File Name = 019-L44 Nit\_cf\_ardua\_bergii0.tif

Date :8 Aug 2011





1  $\mu$ m  
|  
|

Mag = 13.26 K X

WD = 4 mm

EHT = 5.00 kV Signal A = SE2

File Name = 020-L44 Nit\_cf\_ardua\_bergii.tif

Date :8 Aug 2011

